

MOUNTING INSTRUCTIONS

GL 500/GL 650
TRUNK RELOCATION KIT

P/N 021107

PARTS LIST

QUANTITY DESCRIPTION

1	RELOCATION RAIL ASSEMBLY
4	8 MM FLAT WASHER
2	#8 STRUT
2	6 MM x 55 MM BOLT
2	6 MM FLAT WASHER
2	6 MM LOCK NUT

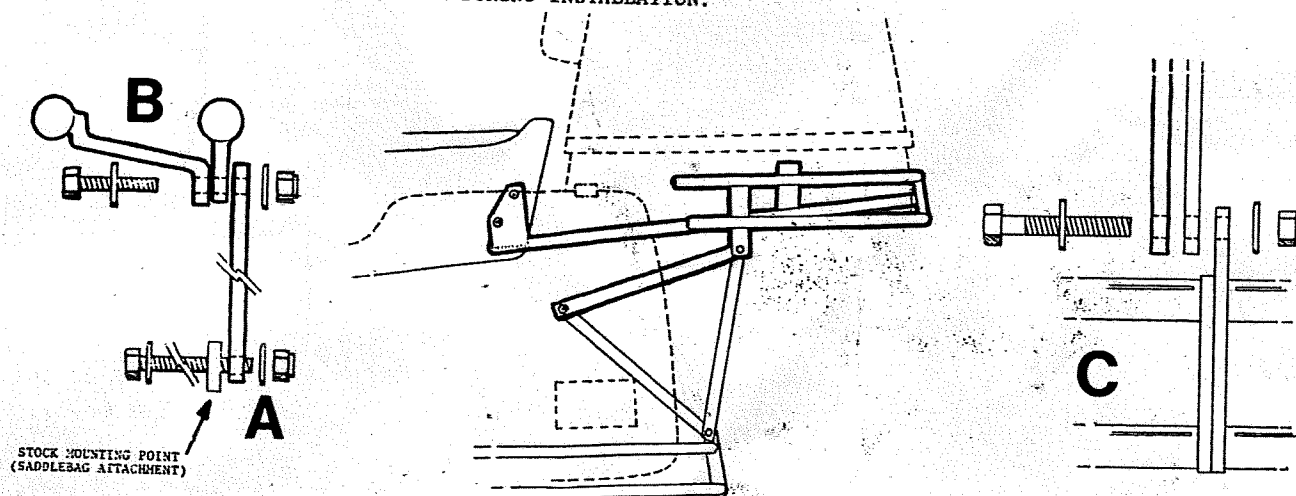
QUANTITY DESCRIPTION

2	1/4-20 x 1" BOLT
2	1/4" FLAT WASHER
2	1/4" LOCK NUT
2	5/16-18 x 1 1/4" BOLT
4	1/4" x .030" FLAT WASHER

1. IF YOUR BIKE HAS SADDLEBAGS, REMOVE THEM FOR INSTALLATION OF THE KIT. ALSO REMOVE THE TRUNK.
2. REMOVE THE LATCH PLATE FROM THE UNDERSIDE OF THE TRUNK, SAVING THE STUD PLATES AND NUTS FOR ATTACHING THE TRUNK TO THE RELOCATION RAILS.
3. REMOVE THE PLASTIC TAIL AND THE SEAT GRAB RAIL FROM THE PASSENGER SEAT. SAVE THE FOUR ALLEN HEAD BOLTS FROM THE GRAB RAIL. NOW INSTALL THE PASSENGER SEAT ON THE BIKE.
4. IF A MARKLAND SADDLEBAG REAR SAFETY SYSTEM IS INSTALLED OR IS TO BE INSTALLED AT THIS TIME, SKIP DOWN TO STEP 6. OTHERWISE, REMOVE THE STOCK 6 MM x 45 MM BOLTS THAT ARE PART OF THE STOCK SADDLEBAG MOUNTING HARDWARE. THESE ARE LOCATED DIRECTLY BELOW THE SADDLEBAG LOCKS. REPLACE THEM WITH THE 6 MM x 55 MM BOLTS PROVIDED IN THE KIT, USING A FLAT WASHER UNDER THE HEAD OF THE BOLT.
5. PLACE ONE OF THE #8 STRUTS ON EACH OF THESE BOLTS WHERE IT PROTRUDES INSIDE THE NUT THAT IS PART OF THE STOCK MOUNTING. SECURE LOOSELY WITH A LOCKNUT. SEE FIGURE A. NOW SKIP TO STEP 7.
6. INSTALL THE MARKLAND REAR SAFETY SYSTEM AS PER DIRECTIONS. THE #8 STRUT THAT WILL SUPPORT THE RELOCATION RAILS IS MOUNTED TO THE CENTER SECTION OUTSIDE THE STRUTS THAT ATTACH THE CENTER SECTION TO THE BIKE. MOUNT THESE AS SHOWN IN FIGURE C, USING THE 5/16" x 1 1/4" BOLTS SUPPLIED WITH THE RELOCATION KIT IN PLACE OF THE 1" BOLTS SUPPLIED WITH THE SAFETY SYSTEM. DO NOT TIGHTEN FULLY YET.
7. PLACE THE RELOCATION RAIL ASSEMBLY IN POSITION ON THE BIKE AS SHOWN IN THE DRAWING. THE FLAT BRACKETS AT THE FRONT OF THE ASSEMBLY ARE ATTACHED TO THE SEAT USING THE HOLES AND THE ALLEN BOLTS FROM THE GRAB RAIL. INSTALL THESE BOLTS NOW WITH AN 8 MM WASHER UNDER THE HEAD OF EACH BOLT. TIGHTEN ONLY FINGER TIGHT.
8. SWING THE PREVIOUSLY INSTALLED #8 STRUTS UP TO MEET THE PAIRED TABS ON THE BOTTOM OF THE RELOCATION RAIL ASSEMBLY. THE STRUT GOES INSIDE THE TWO TABS. BOLT THE TABS AND THE STRUT TOGETHER USING THE 1/4-20 BOLTS AND HARDWARE AS SHOWN IN FIGURE B.
9. NOW TIGHTEN THE BOLTS AT BOTH ENDS OF THE STRUTS AND AT THE PASSENGER SEAT.
10. PLACE THE TRUNK INSIDE THE RAILS BEHIND THE PASSENGER SEAT. ALIGN THE HOLES IN THE BOTTOM OF THE TRUNK WITH THE HOLES IN THE BRACKETS ON THE RELOCATION RAIL ASSEMBLY. INSERT THE STOCK STUD PLATES THROUGH THE TRUNK AND BRACKETS AND FASTEN WITH THE STOCK NUTS.

NOTE: WITH THE RELOCATION KIT INSTALLED, THE TRUNK IS SUSPENDED FAIRLY FAR AFT. BECAUSE OF THE LEVERAGE INVOLVED, WE SUGGEST THAT THE TRUNK NOT BE USED FOR HEAVY LOADS. LARGE WEIGHTS WILL PUT AN UNDUE STRAIN ON THE STOCK MOUNTING POINTS. AS YOU CAN SEE FROM THE ANGLES INVOLVED, THE SITUATION IS WORSE WHEN THE RELOCATION KIT IS INSTALLED WITHOUT THE SAFETY SYSTEM.

NOTE: SINCE THE REAR SEAT SECTION IS NOW BOLTED DOWN, YOU WILL HAVE TO RELOCATE YOUR TOOL KIT TO THE TRAVEL TRUNK DURING INSTALLATION.



FIGURES A, B, AND C SHOW THE LEFT SIDE OF THE INSTALLATION AS SEEN FROM THE REAR.

3500 Carriage Drive
Santa Ana, CA 92704
(714) 754-1151

MARKLAND