



# HONDA CX500

## HOW TO USE THIS MANUAL

This shop manual covers emission controlled CX500's manufactured after December 31, 1977. Some procedures may not apply to earlier units.

This shop manual uses the 1978 CX500 as the basis for all service procedures and data. The manual is kept up-to-date with subsequent addendums beginning with section 21.

Follow the applicable Maintenance Schedule recommendations to ensure that the vehicle is in peak operating condition and the emission levels are within U.S. Environmental Protection Agency standards. Performing the first scheduled maintenance is very important. It compensates for the initial wear that occurs during break-in.

Sections 1 through 3 apply to the whole motorcycle, while sections 4 through 18 describe parts of the motorcycle, grouped according to location.

Find the section you want on this page, then turn to the table of contents on page 1 of that section.

Most sections start with an assembly or system illustration and all the required specifications, torque values, working practices, tools and materials required for the section. The subsequent pages give detailed procedures for the section.

If you are not familiar with this motorcycle, read through the TECHNICAL FEATURES in section 19.

If you don't know the source of the trouble, go to section 20 TROUBLESHOOTING.

ALL INFORMATION, ILLUSTRATIONS, DIRECTIONS AND SPECIFICATIONS INCLUDED IN THIS PUBLICATION ARE BASED ON THE LATEST PRODUCT INFORMATION AVAILABLE AT THE TIME OF APPROVAL FOR PRINTING. HONDA MOTOR CO., LTD. RESERVES THE RIGHT TO MAKE CHANGES AT ANY TIME WITHOUT NOTICE AND WITHOUT INCURRING ANY OBLIGATION WHATSOEVER. NO PART OF THIS PUBLICATION MAY BE REPRODUCED WITHOUT WRITTEN PERMISSION.

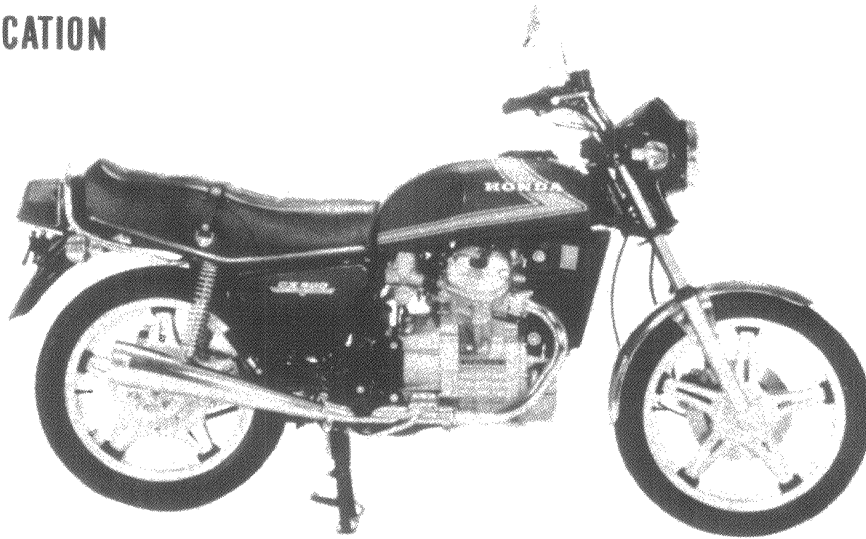
HONDA MOTOR CO., LTD.  
Service Publications Office

## TABLE OF CONTENTS

	GENERAL INFORMATION	1
	LUBRICATION	2
	INSPECTION AND ADJUSTMENT	3
ENGINE	FUEL SYSTEM	4
	ENGINE REMOVAL/INSTALLATION	5
	CYLINDER HEAD/VALVE	6
	CLUTCH/OIL PUMP	7
	A.C. GENERATOR/FLYWHEEL/ REAR COVER	8
	COOLING SYSTEM	9
	CAMSHAFT/CAM CHAIN	10
	TRANSMISSION	11
	CRANKSHAFT/PISTON	12
	CHASSIS	FRONT WHEEL/SUSPENSION
REAR WHEEL/BRAKE/FINAL DRIVE/ SUSPENSION		14
HYDRAULIC DISC BRAKE		15
ELECTRICAL	BATTERY/CHARGING SYSTEM	16
	IGNITION SYSTEM	17
	STARTER SYSTEM	18
	TECHNICAL FEATURES	19
	TROUBLESHOOTING	20
ADDENDUMS	'79 ADDENDUM	21
	'79 DELUXE/CUSTOM ADDENDUM	22
	'80 DELUXE/CUSTOM ADDENDUM	23
	'81 DELUXE/CUSTOM ADDENDUM	24
	'82 CUSTOM ADDENDUM	25



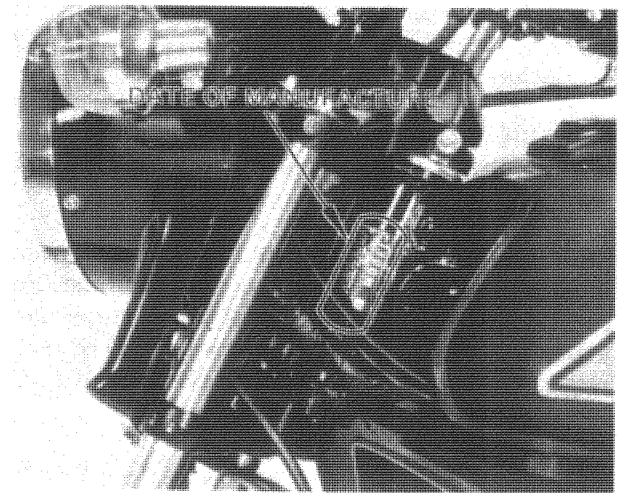
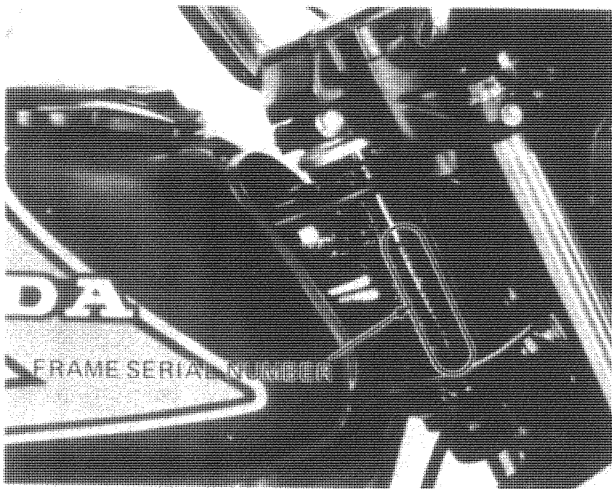
## MODEL IDENTIFICATION



BEGINNING WITH F/N 2000001

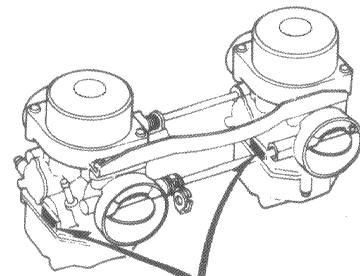
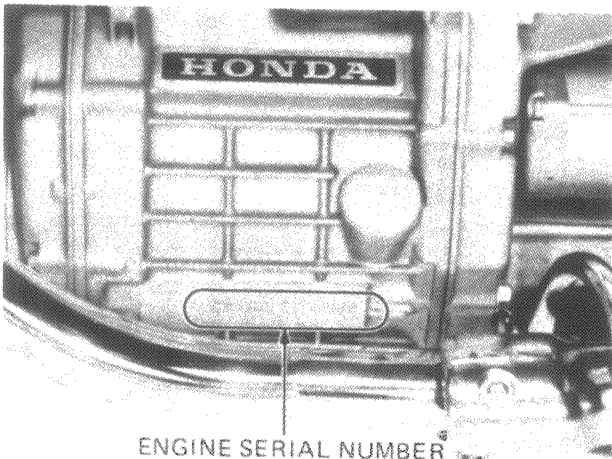
The frame serial number is stamped on the right side of the steering head.

The legal vehicle identification number is on the left side of the steering head.



The engine serial number is stamped on the lower left side of the engine case.

The carburetor identification number is on the left side of the carburetor body.



IDENTIFICATION NUMBER